

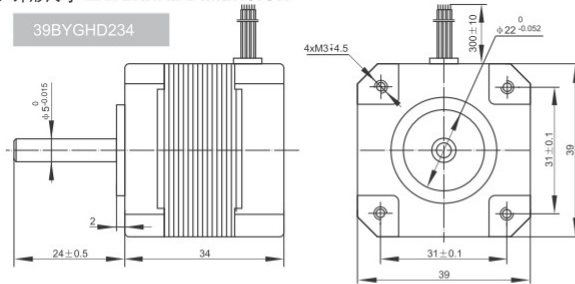
本品专利：
提供直线运动的步进电机（专利号：200820167691.4）

LINIX® Since 1968

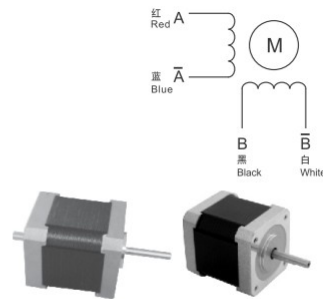
● 电机参数 SPECIFICATIONS

Type 型号	Poles 相数	Step angle 步距角	Current per phase 相电流	Inductance per phase 相电感	Holding torque 保持转矩	Rated speed 额定转速	Rated torque 额定转矩
		° /step	A/phase	mH/phase	Kg.cm	r/min	Kg.cm
39BYGHD234	2	1.8	0.8	2.8	1.2	200	0.8

● 外形尺寸 EXTERNAL DIMENSION



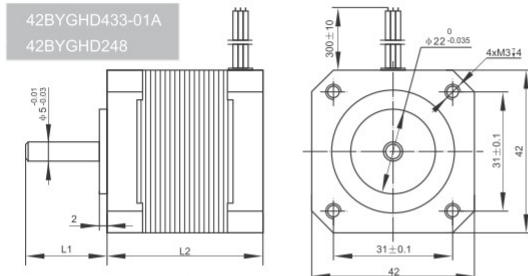
● 接线图 WIRING DIAGRAM



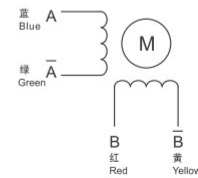
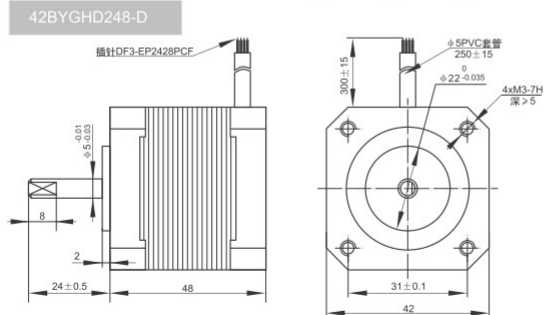
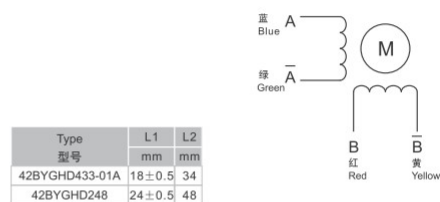
● 电机参数 SPECIFICATIONS

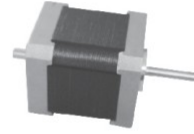
Type 型号	Poles 相数	Step angle 步距角	Current per phase 相电流	Inductance per phase 相电感	Holding torque 保持转矩	Rated speed 额定转速	Rated torque 额定转矩
		° /step	A/phase	mH/phase	Kg.cm	r/min	Kg.cm
42BYGHD234-01A	2	1.8	0.4	30	2	150	1.5
42BYGHD439-01	4	1.8	0.8	7.5	2.5	200	2
42BYGHDS444-02A	4	1.8	0.5	26	3.5	200	2.5
42BYGHD248	2	1.8	1.2	7	4	300	2.5
42BYGHD248-D	2	1.8	2	2.2	5	300	5
42BYGHD248/60JB	2	1.8	1.2	7	4	300	2.5
42BYGHD248/70JB	2	1.8	1.2	7	4	300	2.5

● 外形尺寸 EXTERNAL DIMENSION

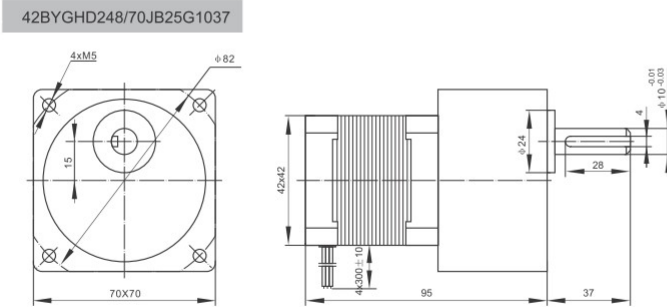
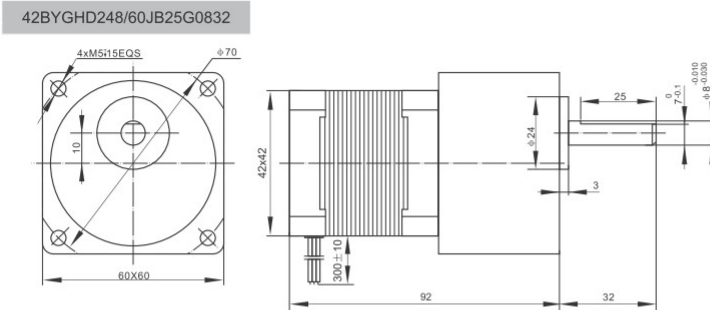
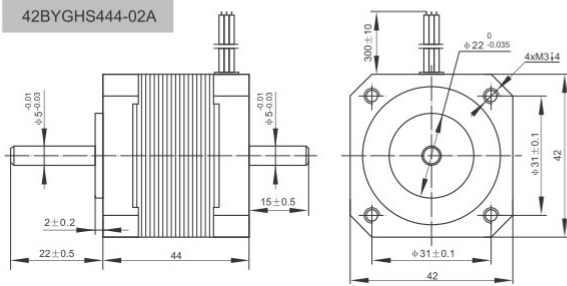
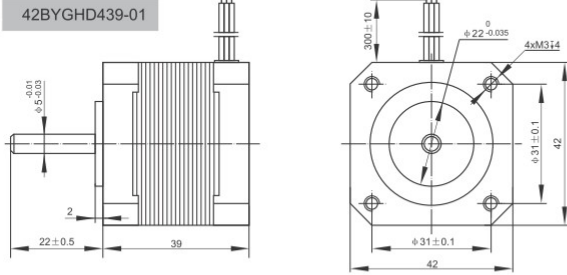


● 接线图 WIRING DIAGRAM

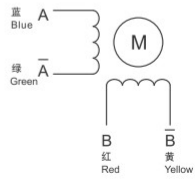
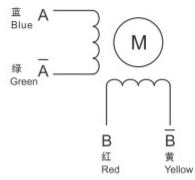
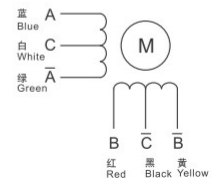
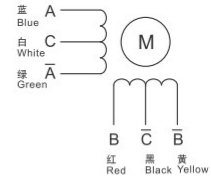




● 外形尺寸 EXTERNAL DIMENSION



● 接线图 WIRING DIAGRAM



本品专利：
步进减速电机（蜗轮）（专利号：201030038564.7）

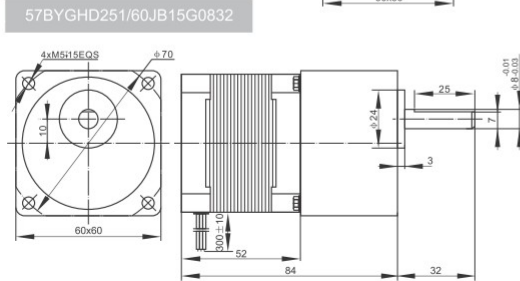
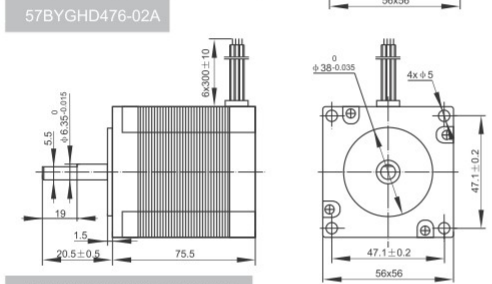
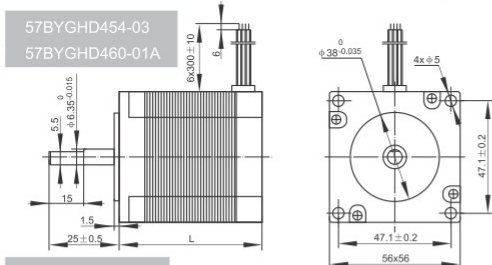
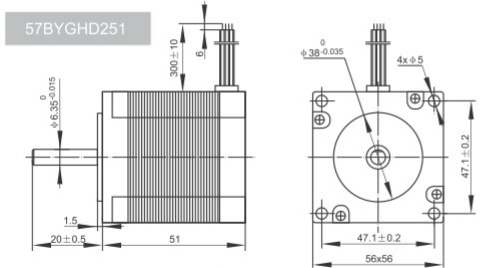
LINIX® Since 1968



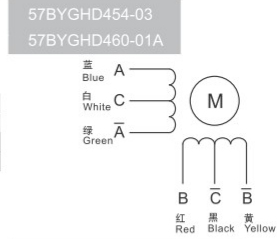
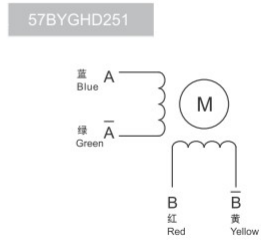
● 电机参数 SPECIFICATIONS

Type 型号	Poles 相数	Step angle 步距角	Current per phase 相电流	Inductance per phase 相电阻	Holding torque 保持转矩	Rated speed 额定转速	Rated torque 额定转矩
		°/step	A/phase	Ω/phase	Kg.cm	r/min	Kg.cm
57BYGHD251	2	1.8	1.2	8	6	200	4
57BYGHD454-03	4	1.8	2	3.2	7	300	4
57BYGHD460-01A	4	1.8	4	1.8	8.5	300	5
57BYGHD476-02A	2	1.8	2	2.25	13.5	200	10
57BYGHD251/60JB	2	1.8	1.2	8	6	200	4
57BYGHD476-02A/60JB	2	1.8	2	2.25	13.5	200	10
57BYGHS276-03	2	1.8	3	4	15	1000	11

● 外形尺寸 EXTERNAL DIMENSION



● 接线图 WIRING DIAGRAM



Type 型号	L mm
57BYGHD454-03	54
57BYGHD460-01A	60

